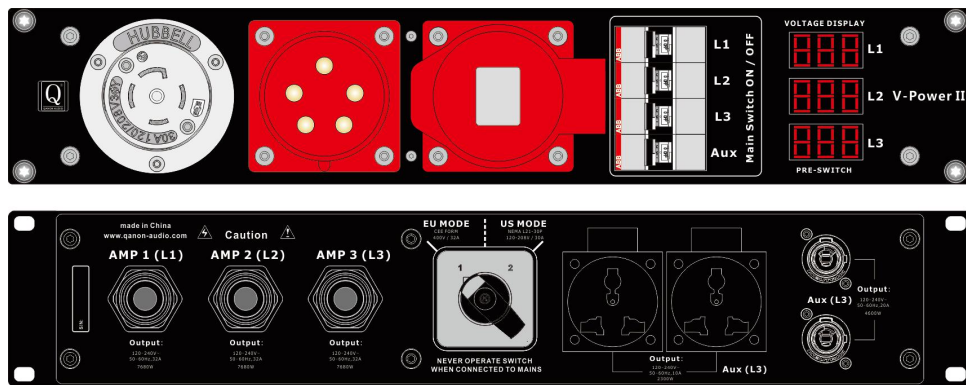




V-PowerII Power Supply





V-PowerII Power Supply

V-PowerII

2U / 19 "I / O power supply, compatible with VDA-Rack / C15 -Rack power supply, automatically balance the number of VDA18 per phase. It has three-phase NEMA I21-30p input (US mode) and 400V power supply (EU mode) with 32A socket.

Either US mode or EU mode, the power switch is allowed to operate. Two universal sockets and PowerCon 20A sockets can also be used for auxiliary power supply. Each switch is matched with a circuit breaker, and three LED displays help to monitor the presence of each phase in the front end of the power circuit.

Technical Specification

Front connectors

Main power AC input (US)	30A-NEMA L21-30P (3P+N+E) male outlet
Main power AC input (EU)	32A 5pin (3P+N+G) male outlet
Main power AC input (EU)	32A 5pin (3P+N+G) female outlet
	Danger: Do not use with a 120-208V power supply
Main power Switch	L1 , L2 , L3 , Aux
AC Voltage Panel display	3 x LED display

Rear connectors

Amplifier Power Output	3 x 32 A Neutrik powerCON® Connectors AMP 1 L1、AMP 2 L2、AMP 3 L3
AC input selector switch	EU Mode 32A 400V US Mode 30A 120V~208V
Auxiliary power supply (20)	2 x 20A Universal socket (L3) Do not switch between modes when connected to power supply.
Auxiliary power supply	2 x 10A PowerCon (L3) Do not switch between modes when connected to power supply.

Physical data

Dimensions (W x H x D)	483 x 88 x 250 mm
Material	Metal
Finish	Black
Protection rating	IP2x
Weight	7.5kg / 16.5lb



V-PowerII Dimensions CAD

